



Knowledge to Go Places

Animal Behavior Activity Book

Contains:

Dog Bite Prevention Information

Proper Animal Care Tips

Training Tips for Kids

Word Find Puzzle

Crossword Puzzle





Always ask permission to pet a dog.



"When a strange dog approaches you, stand like a tree or be like a rock."

"Do not touch a dog that is "



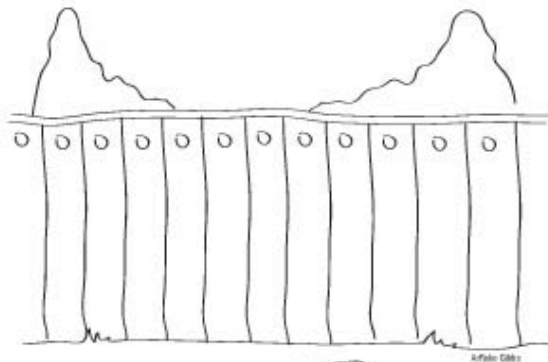
Sleeping.



Eating.

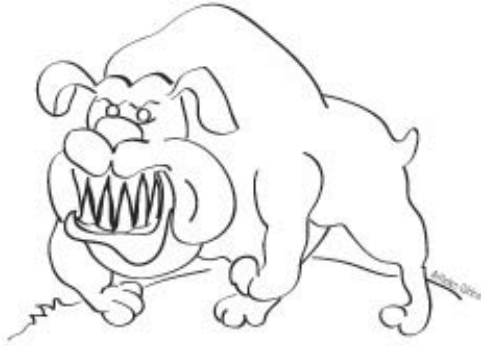


Caring for puppies.



Tied up/Behind a fence.

"Which dog is ok to pet?"



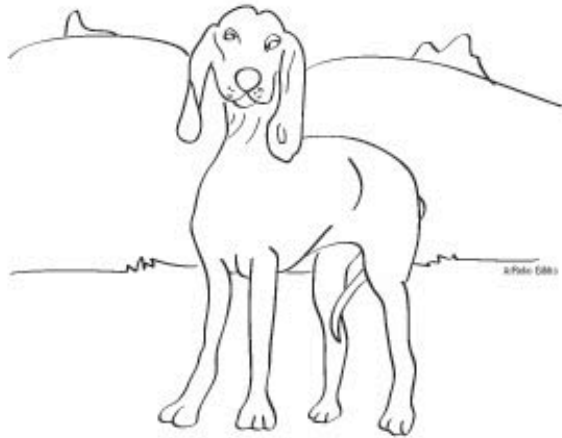
Growling/Baring teeth.



Dog on a leash with an adult.



Play bow with a toy.



Scared pose.

Dog Bite Prevention Quiz



•Most dogs that bite are:

- A) Family dogs
- B) Big Dogs
- C) Stray dogs
- D) Lonely dogs

According to the Humane Society of the United States, 77% of dogs that bite are dogs that we know whether it is our own dog, a friend's dog, or a neighbor's dog. No matter what a dog's size, they are equally likely to bite and likewise, they are equally likely to never bite.

Surprisingly, stray dogs are the least likely to bite for two main reasons. The first is that we are taught to stay away from stray dogs and secondly, stray dogs are usually scared so they stay away from us.

Lonely dogs probably just want some love and attention rather than wanting to bite.

•Who is most likely to be bitten by a dog?

- A) Babies
- B) Children
- C) Teenagers
- D) Adults

Yes! 50-60% of bite victims are children!

•If a strange dog approaches you, you should...

- A) Stare at it to show that you are in control.
- B) Run away and scream help as loud as you can.
- C) Stand very still.

When you stare into the eyes of a dog, in dog language you are saying that you dare him to bite you.

If you run and scream, you will only scare the dog and/or excite him. He will chase you and possibly jump up on you, push you down and bite you.

If you stand still and be really boring, he will get bored and leave you alone.

- You should NEVER bother a dog that is...
 - A) Eating
 - B) Sleeping
 - C) Taking care of puppies
 - D) You should not disturb a dog that is doing any of the above.



You should never disturb a dog that is eating, sleeping or caring for puppies. They are protecting what is important to them - even if they know! Never touch ANY dog in any of these situations - get an adult!

- It is safe to pet a dog that is...
 - A) With an adult and on a leash
 - B) In a yard with a fence around it
 - C) Tied up
 - D) All of the above



The only time that you are allowed to pet a new or strange dog is if it is with an adult AND on a leash.

A dog in a yard with a fence can still bite you. He can also try and dig out or jump over the fence.

A dog that is tied up can still bite you. Stay VERY far away from dogs that are tied up.

- When meeting a dog, you should always...
 - A) Ask permission from the adult
 - B) Let it sniff you
 - C) Approach it slowly
 - D) All of the above

You should do all of these things when meeting a dog - even dogs that you already know!

- If your dog is spayed or neutered...
 - A) It will get fat
 - B) It will be less likely to bite
 - C) It will be more likely to bite
 - D) It will run away more

If you **overfeed** your dog, he/she will get fat!

If you spay or neuter your dog, he/she will be healthier, nicer, less likely to run away and yes, less likely to bite!

•It is ok to train your dog to be aggressive...

- A) If it is used for dog fighting
- B) If it is used to protect your house
- C) If it is a hunting dog
- D) It is never ok to train your dog to be aggressive



Dog fighting is illegal - against the law! If you are caught fighting your dog, you might go to jail, pay money in fines, and have your dog taken away.

You don't have to train your dog to protect you - he will do that anyway. If you train your dog to be mean to strangers, he will be more likely to bite someone that isn't a stranger. If you want a guard dog, teach your dog to bark at strangers. If a stranger wanted to harm you, your family or your belongings, a barking dog will scare them away.

Hunting dogs are not trained to be mean. They are trained to find the animals that the human is hunting. Hunting dogs are NOT mean to people.

If you train your dog to be mean, you are asking for trouble and someday, that dog will bite you or someone you love.

•A mad dog...

- A) Shows his teeth and growls
- B) Is ok to pet
- C) Won't bite if it knows me
- D) Both A and C

A mad dog is NOT ok to pet, whether you know the dog or not. Don't press your luck!

Answers: 1) A, 2) B, 3) C, 4) D, 5) A, 6) D, 7) B, 8) D, 9) A

Source:

<http://www.accesskent.com/CultureLeisureAndTransit/KidsCorner/animal/bite.html>

PROPER ANIMAL CARE TIPS

All animals need the following:

FOOD

Never approach a dog that is eating, even if it is your own dog!

The dog might bite you. If a dog growls at you, SLOWLY walk away and tell an adult.

Only feed food from a bag. Ask an adult before you feed an animal. Some food can be dangerous to your pet.

NEVER give your dog chocolate. It is safe for humans, but not dogs.

SHELTER

Dogs and cats should live mostly INDOORS.

Dogs that live in the yards are more likely to escape and destroy the grass!



ALL MINE !!



WATER

Animals should have access to fresh water at all times.

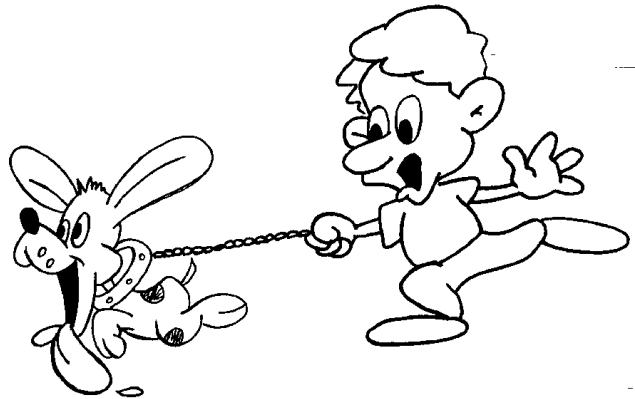
PEOPLE TO CARE FOR THEM

Animals that do not get enough love from people are often scared.

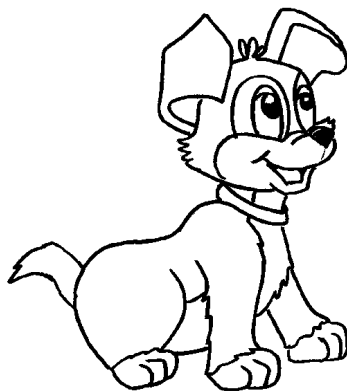
Always make sure an adult is present before you begin to pet a dog or cat. Reward the animal with small treats while you pet them.

TRAINING TIPS FOR KIDS

Does this picture look familiar? A head halter can make walking a dog much easier!!



- Adults must always be present when you are with an animal. Even the nicest dogs and cats can become frightened or aggressive.
- All animals should be trained using praise and treats.
- Never hit an animal, even if it jumps on you or scratches you.
- Never scream at or near an animal. This can cause the animal to be scared of you, and may even growl at you.
- Keep your face away from a dog's face. Most dogs do not like to be kissed or hugged.



Parent information

Below are resources for training and children:

Available on [amazon.com](https://www.amazon.com)

Dog Training for Children with Ian Dunbar, 1997 VHS

This video is written and hosted by veterinarian, animal behaviorist, and author Dr. Ian Dunbar — the world's leading authority on dog behavior and training. Dr. Dunbar is the original creator and popularizer of off-leash puppy classes, which sparked the revolution for positive, reward-based, dog-friendly dog training.

[A good website:](http://www.loveyourdog.com/)

<http://www.loveyourdog.com/>

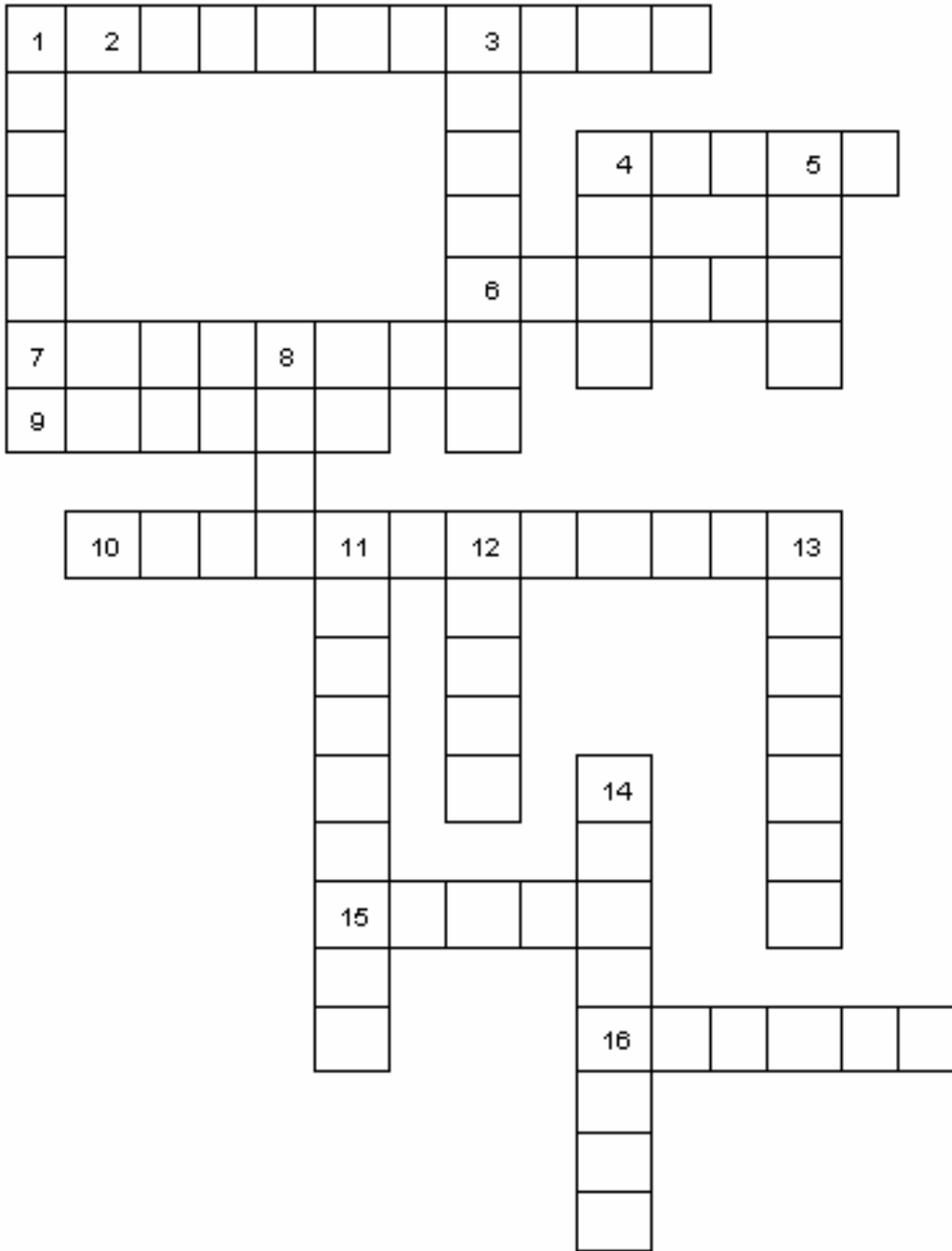


Word Find

A	D	E	E	A	S	U	L	G	J	I	H
D	N	R	T	O	N	E	M	F	E	R	Q
I	L	U	I	S	T	D	E	S	O	B	F
N	B	X	B	G	M	H	R	O	P	C	S
M	K	T	G	E	N	O	M	B	S	L	N
V	W	G	B	N	H	Y	B	U	N	A	T
G	N	E	C	T	R	A	I	N	E	R	A
C	E	L	D	L	F	P	V	I	K	L	B
D	E	M	T	E	V	S	H	I	F	L	J
O	H	A	R	L	B	T	Z	K	O	N	G
K	S	T	M	E	N	E	U	T	E	R	M
N	C	I	T	A	C	R	B	O	D	N	D
S	I	A	S	D	W	Q	Y	F	P	L	Z
T	J	C	G	E	O	A	C	A	W	T	E
I	E	T	A	R	C	G	A	T	Y	D	M

Bite CSU Neuter Vet Med Horse
 Kong Gentle Leader Cat Dog
 Spay Crate Behavior Trainer

Cross Word Puzzle





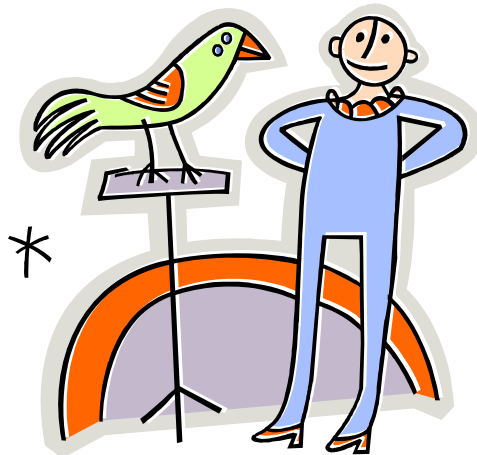
Clues For The Crossword Puzzle

DOWN:

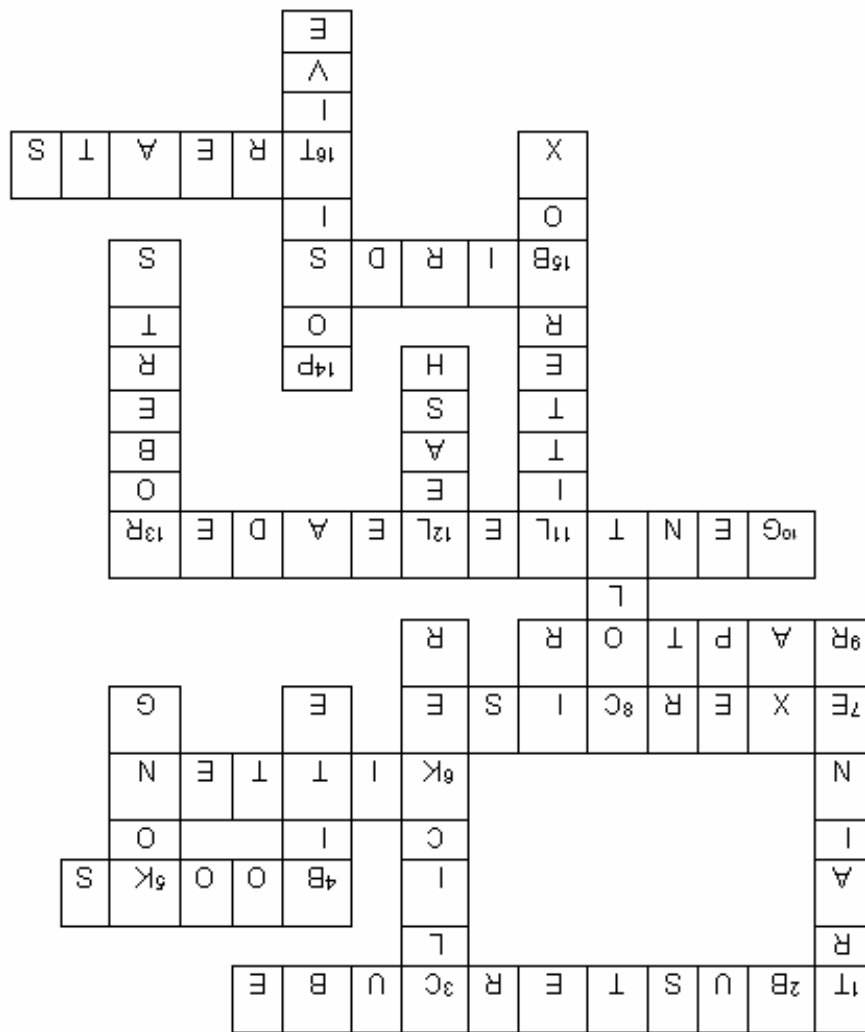
- 1: A PERSON WHO TEACHES BEHAVIOR
- 3: A NOISE MAKING DEVICE FOR TRAINING
- 4: A FEARFUL OR AGGRESSIVE ANIMAL MAY DO THIS
- 5: CAN BE STUFFED WITH TREATS
- 8: A YOUNG MALE HORSE
- 11: INDOOR BATHROOM FOR CATS
- 12: ATTACH TO GENTLE LEADER FOR TRAINING
- 13: HORSE WHISPERER MONTY _____
- 14: BEST TYPE OF REINFORCEMENT

ACROSS:

- 2: INTERACTIVE TOY WITH KIBBLE INSIDE
- 4: GREAT RESOURCES FOR TRAINING
- 6: A YOUNG CAT
- 7: AN IMPORTANT PART OF A HAPPY PET
- 9: A BIRD OF PREY OR CSU _____ CENTER
- 10: A TRAINING TOOL FOR ON A DOGS HEAD
- 15: A FEATHERED ANIMAL WHICH CAN BE TAUGHT MANY BEHAVIORS
- 16: AN ANIMAL GETS THESE FOR GOOD BEHAVIOR



Crossword puzzle Answers



Cross Word Puzzle



*Thank you for your support of the Colorado State University Veterinary
Medical Center!*



College of Veterinary Medicine
and Biomedical Sciences
1601 Campus Delivery
Fort Collins, CO 80523-1601
(970) 491-7051
Fax: (970) 491-2250
<http://www.cvmbs.colostate.edu/>